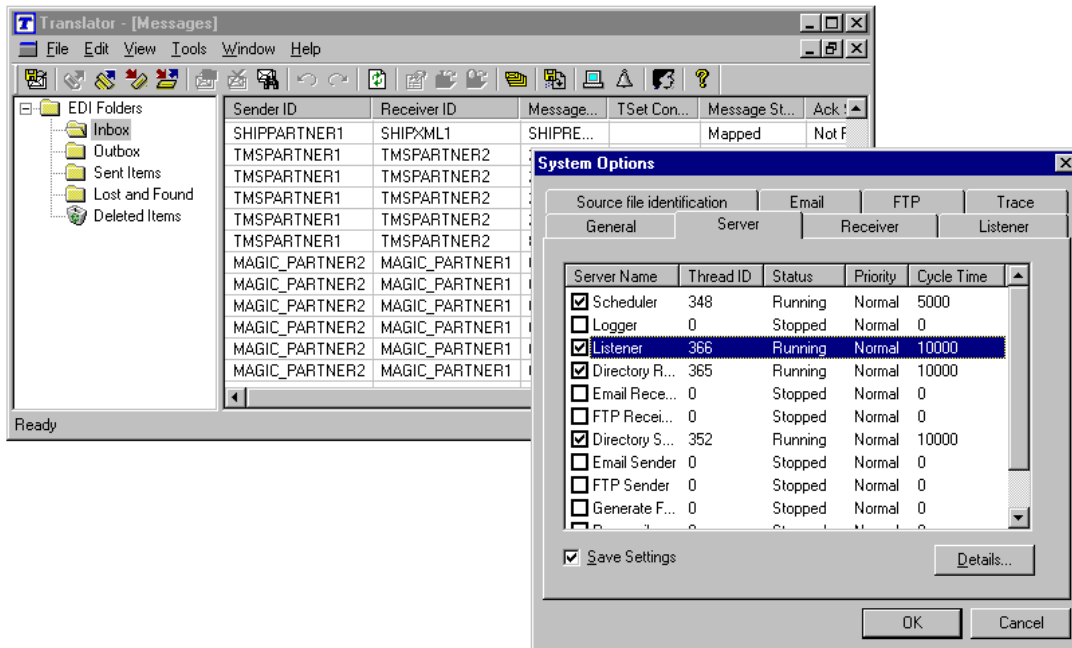


**Translator** seamlessly integrates with your business application and translates live messages in various EDI formats in either direction with your trading partners.



## Key Benefits

- Any-to-Any conversion:** Translator supports conversion of messages between any application format and any partner format, such as X12, EDIFACT, XML (Rosettanet, xCBL, cXML, UBL, etc), Proprietary formats and Databases (MS SQL Server, Oracle, MySQL, etc). User can design their business application messages keeping their **long-term IT goals** in mind without worrying about the issues of future modifications to the data formats of your existing and new trading partners.
- Data Integrity:** Both application and partner EDI messages are exhaustively checked for syntax integrity, implementation guide requirements such as the need for data balancing requirement, conditional or situational requirements, validation of data against external code sets, trading partner specific data validation requirements, etc. The user is assured that their incoming and outgoing business application and partner messages are free of error.
- Seamless 24x7 operations:** Translator integrates with your business application residing on any platform in a format most suited to your business application and exchanges messages using a number of options such as a common directory, a common database, or through APIs (COM, Java, web-services). Its multithreading architecture facilitates 24x7 unattended operations, informing your system administrator with an email if there are any errors in translation.

## Other Features and Benefits

**EDI Formats:** Supports X12, EDIFACT, XML, proprietary formats and also databases.

*Benefits: The user is not required to write proprietary program to accommodate a new partner, or a new message, or changes in the structure of existing message, which greatly reduces time and cost for establishing a new trading partner relationship.*

**Multithreaded Architecture:** Translator's multithreaded architecture uses separate server threads for receiving messages from different sources, sending messages to different destinations, and for scheduling translations etc. It also uses separate threads for translating each interchange.

*Benefits: Multithreaded architecture enables 24x7 unattended operations and significantly boosts the performance of translator.*

**Message Routing:** Supports the intelligent routing of multiple EDI messages received in the same EDI interchange based on various agreements.

*Benefits: Every message has a corresponding trading partner agreement, which specifies where the message is to be routed after translation. This contributes to better organization of your incoming messages because each message type and/or partner can be stored in its own directory and also processed by different business applications.*

**Functional Acknowledgement:** Supports automatic generation and reconciliation of functional acknowledgements. The user may create proprietary acknowledgement messages

*Benefits: A positive acknowledgement assures you and your partner that the message was syntactically correct. A negative acknowledgement would specify where the syntax-error occurred in the message, which alerts you to the need to take corrective action.*

**Checks duplicate messages:** Messages are examined for duplicity against prior messages based on number of criteria, such as control numbers, sender, receiver, message type and date with the option to use the business key as well. Duplicate messages are not forwarded to the business application.

*Benefits: The user is assured that their business application is not receiving any duplicate messages and is freed from doing such checking in their business application.*

**Tracking Transactions:** Translator performs extensive transaction logging. The messages can be tracked using sender, receiver, message types, date periods and even your own business key along with the facility to build customized reports. Errors in translation are notified via email and also by logging the status of translations in a status file. Old transactions can be archived and then retrieved at a later date.

*Benefits: The user can intelligently track messages sent and received. User is able to take timely action for events, which are essential to their business. For example, if an error occurs in an incoming purchase order message, you would certainly want to take quick action to prevent the loss of a sale. The users can more efficiently manage their disk space by archiving messages no longer in use, allowing them to comply with the applicable electronic law for electronic data retention requirement. Smaller transaction logs also help to optimize Translator performance.*

**Communication:** Supports EDI over the Internet and via VAN (value-added network provider) through Email and FTP. It is also interface with your Email client using MAPI to enable S/MIME communication.

*Benefits: User can select different communication methods for each trading partner agreement.*

**System Requirement:** Windows Platform (NT, 2000, XP). 128MB RAM. 500MB free hard disk space.

Contact: EDISPHERE Software Private Limited  
215 Congress Nagar, Nagpur 440 012, India  
Tel: +91 712 246 3314 Fax: +91 712 246 3315 Email: [info@edisphere.com](mailto:info@edisphere.com)

**Disclaimer:** EDISPHERE Software makes no warranties, expressed or implied, in this summary. Readers are advised to use their judgment on accuracy of information by requesting evaluation copy of the product.